



European Union

European Regional
Development Fund
Investing in your future

A project supported by the
INTERREG IVA Programme managed
by the Special EU Programmes Body



Summary and Forward look

Ray Scanlon
Interim Principal Geologist
GSI Tellus Manager



A project supported by the
INTERREG IVA Programme managed
by the Special EU Programmes Body



Summary and forward look

1. Summary
2. Value of the survey
3. Tellus more?



European Union
European Regional
Development Fund
Investing in your future

A project supported by the
INTERREG IVA Programme managed
by the Special EU Programmes Body

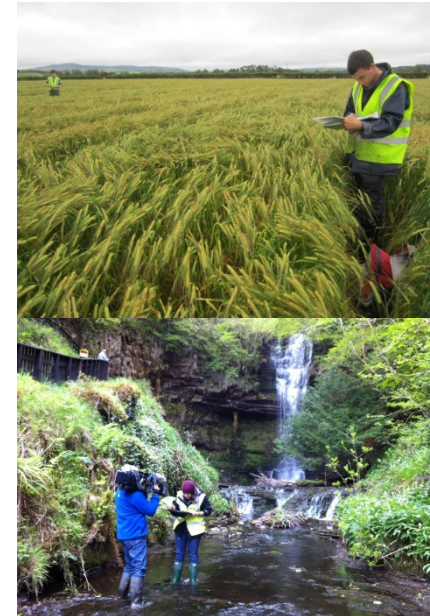


Summary

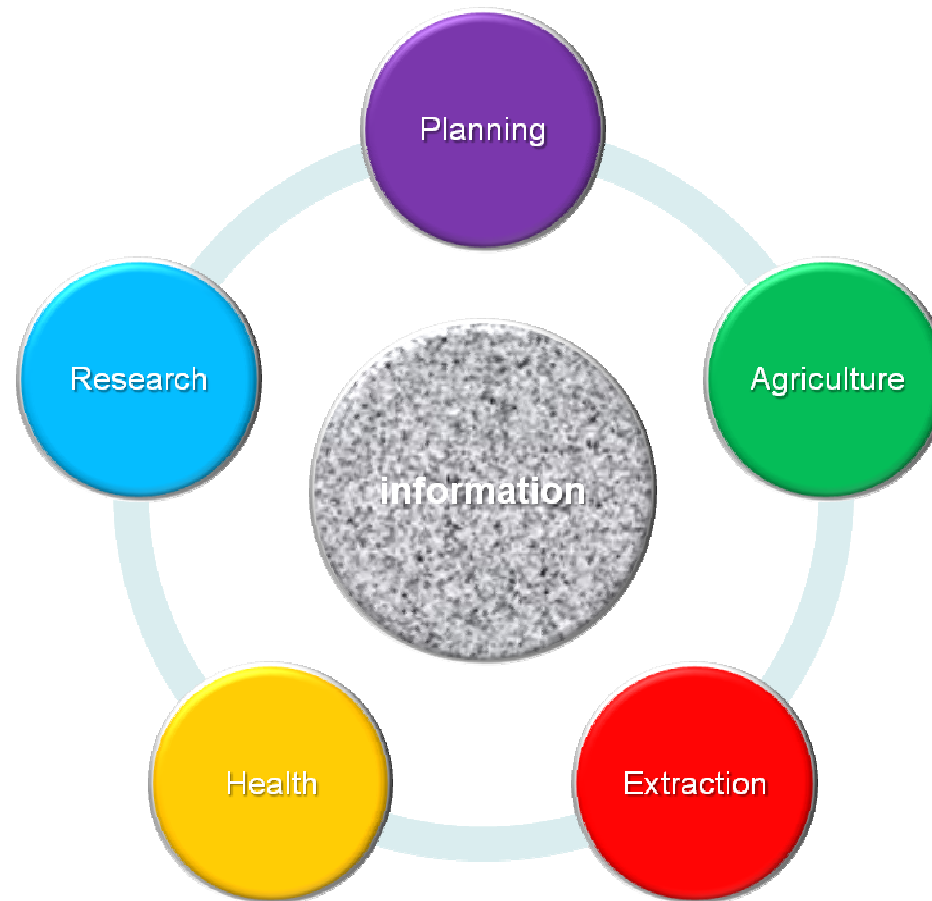
- World class environmental survey data released
 - Free and open access to all
- Data released today has applications in
 - Environmental management
 - Geological mapping
 - Agricultural productivity
 - Human health (radon, arsenic etc.)
 - Much more.....

Summary

- Understanding Underground
 - More than a tag line
- A place society needs to understand
 - Grow our food
 - Bury our waste
 - Extract drinking water
 - Build our houses on
 - Quarry for sand and gravel
- **Data is central** to managing the conflicting demands we place on our planet



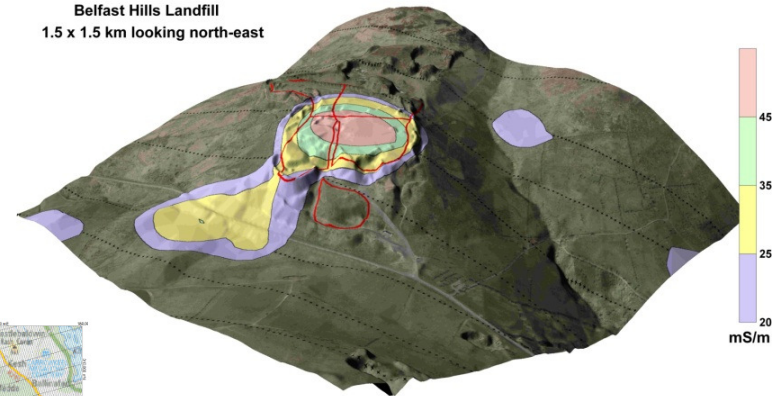
Data at the centre of good management



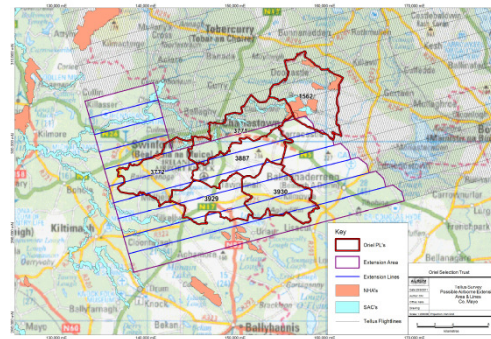
More data.....

- More airborne data
 - Electromagnetic (EM) data
 - Charlestown Block

Belfast Hills Landfill
1.5 x 1.5 km looking north-east



AEM shallow apparent conductivity (25kHz)
200m flight line sampling (dots)
Conductivities > 20 mS/m
5 cell construction in red



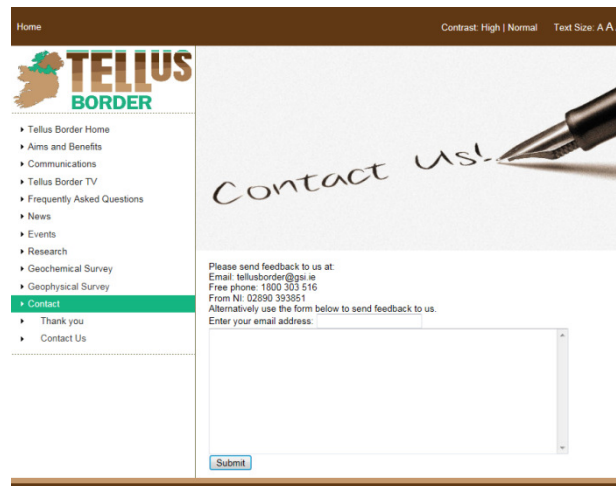
- More Geochemistry data
 - Over 100 new datasets from stream samples

More data: Charlestown block

- Industry Investment
- Data levelled and merged with main dataset
 - Magnetics
 - Radiometrics
 - EM
- Extension paid for by Oriel Selection Trust
 - Data will be made freely available in April
 - Saving to the state of c. **€60k**

More data: secondary data releases

- Data for download as soon as they become available
- July update to viewer layers
- [Sign up on website for data release notifications](http://www.tellusborder.eu)
 - www.tellusborder.eu



Home Contrast: High | Normal Text Size: A A A

**TELLUS
BORDER**

- Tellus Border Home
- Aims and Benefits
- Communications
- Tellus Border TV
- Frequently Asked Questions
- News
- Events
- Research
- Geochemical Survey
- Geophysical Survey
- **Contact**
- Thank you
- Contact Us

Contact us!

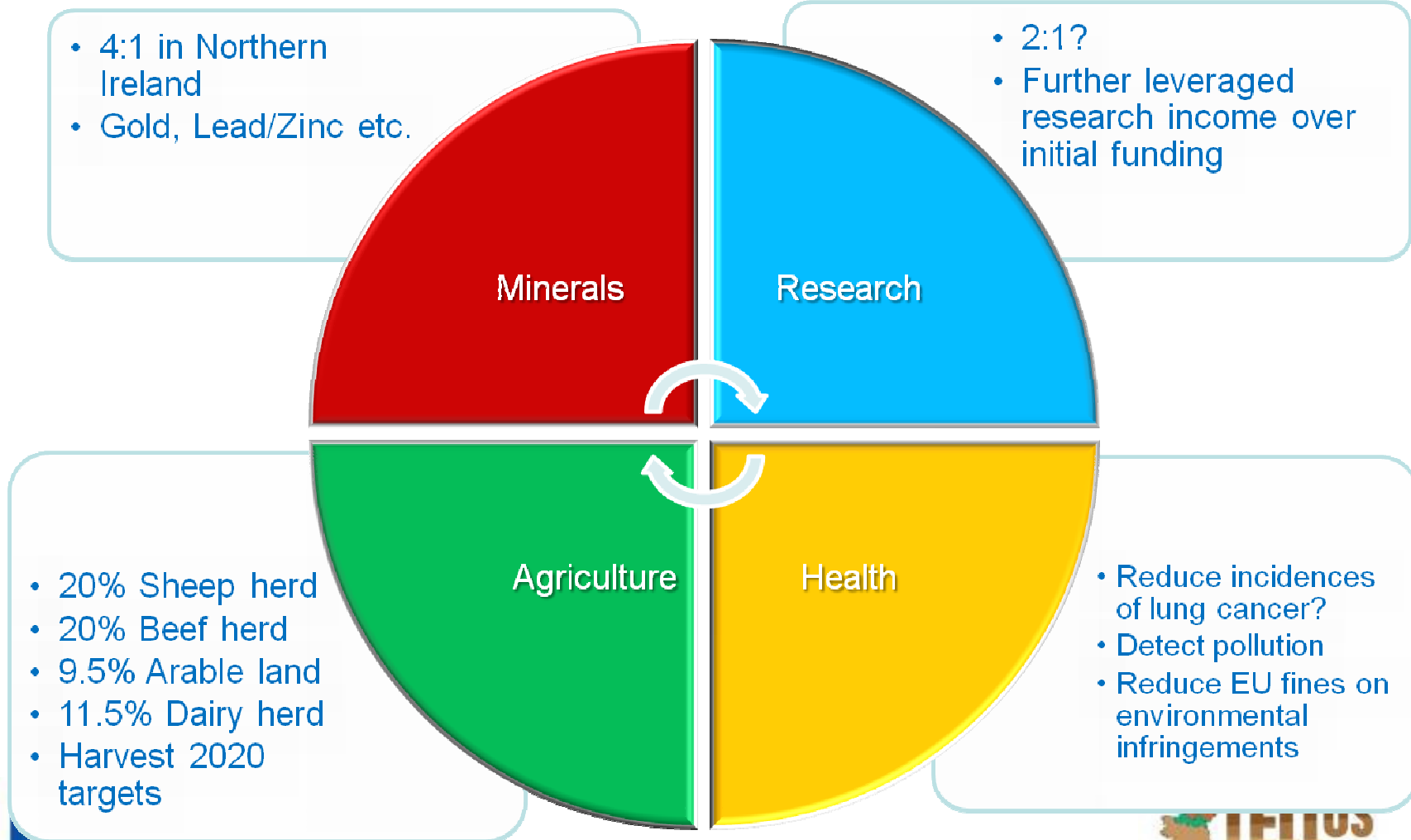
Please send feedback to us at:
Email: tellusborder@gsi.ie
Free phone: 1800 303 516
From NI: 02890 393951
Alternatively use the form below to send feedback to us.

Enter your email address:

Value of the survey

- Original all island CBA suggested between 4:1 and 5:1 return on investment
- The **value of this survey** can be measured in the future on a number of fronts;
 - Direct investment in mineral exploration
 - Agricultural benefits
 - Hard to measure directly, but possibly significant
 - Savings in the health sector (radon etc.)
 - Harder again to measure
 - Investment in Research
 - Leveraged income

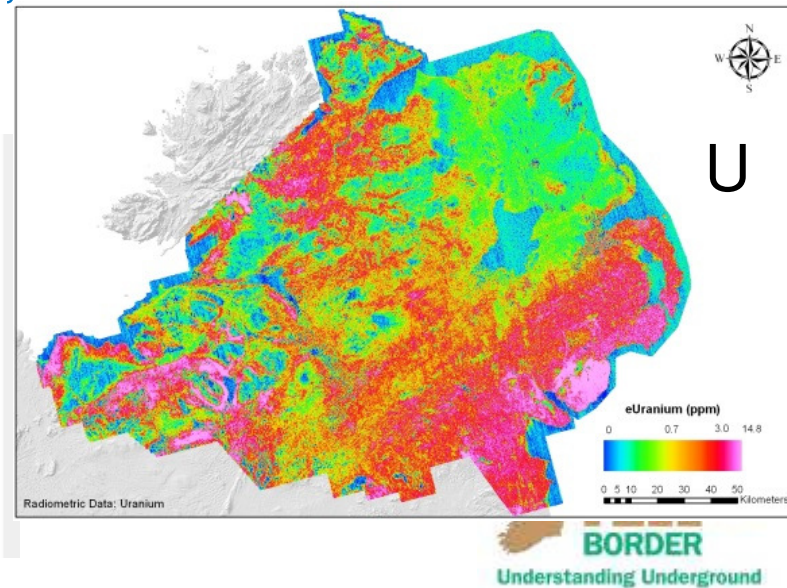
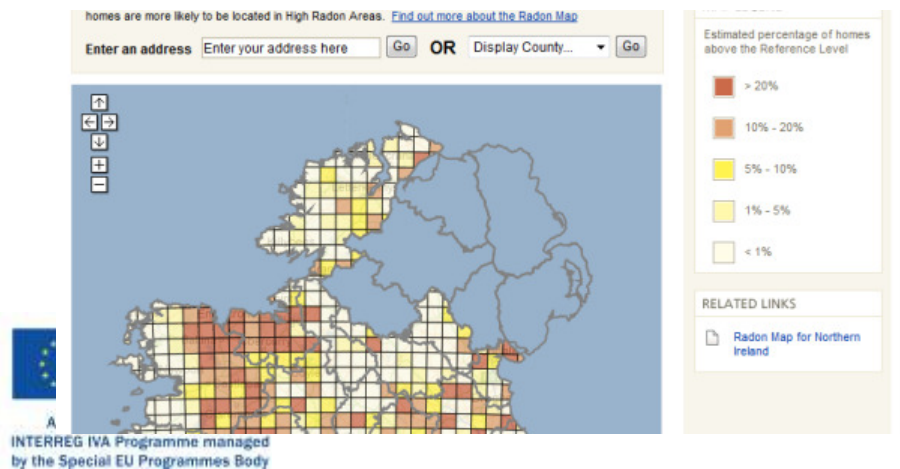
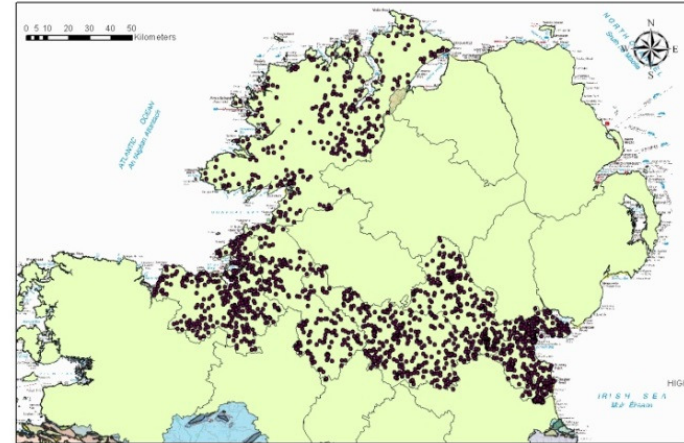
Overall Return on Investment?



Value of the survey: Radon example

Working with RPII to Improve knowledge of high radon areas.

Working on pilot project utilising in-house measurements, geology, airborne measurements



Tellus more???

- SEUPB public consultation on INTERREG V (2014-2020)
- Project ideas for future cross border region
- Leveraging data for future applied uses
 - Deep geothermal energy
 - Groundwater assessment
 - Critical Raw Materials assessment
 - Etc.
- Open to other ideas and partners on “adding value”!!



Special EU Programmes Body
Foras Um Chláir Speisialta An AE
Boord O Owre Ocht UE Projects

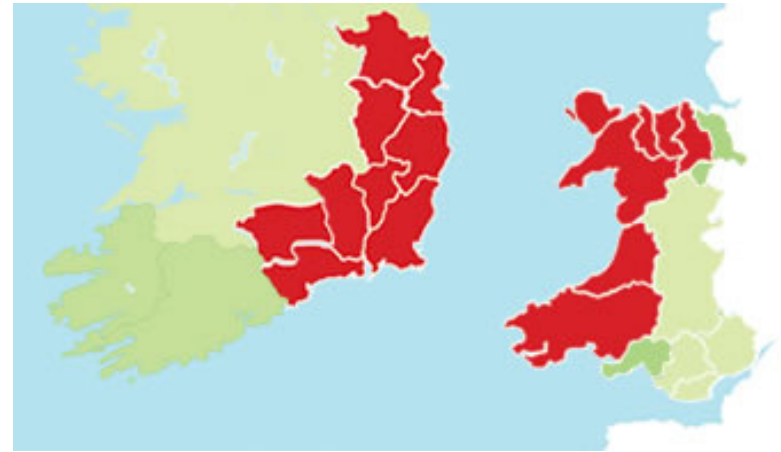


A project supported by the
INTERREG IVA Programme managed
by the Special EU Programmes Body



Tellus more???

- Future survey plans
 - Seeking funding options
 - Other INTERREG areas
 - Ireland – Wales?
 - EU Rural Development Fund?
 - Industry partnerships
 - Open to collaborations!



European Regional
Development Fund
Investing in your future
A project supported by the
INTERREG IVA Programme managed
by the Special EU Programmes Body



Date for Diary: October 24th 2013

- **Tellus Border Final Conference**
- “The Story Behind the Data”
 - Interpretations of datasets and anomalies
 - Case studies from multiple sectors
 - Research outputs
 - Soil Carbon in Peat
 - Pollution Plumes
 - Wetland Management
 - Research Call outputs



A project supported by the
INTERREG IVA Programme managed
by the Special EU Programmes Body

